



Capacity
125kg



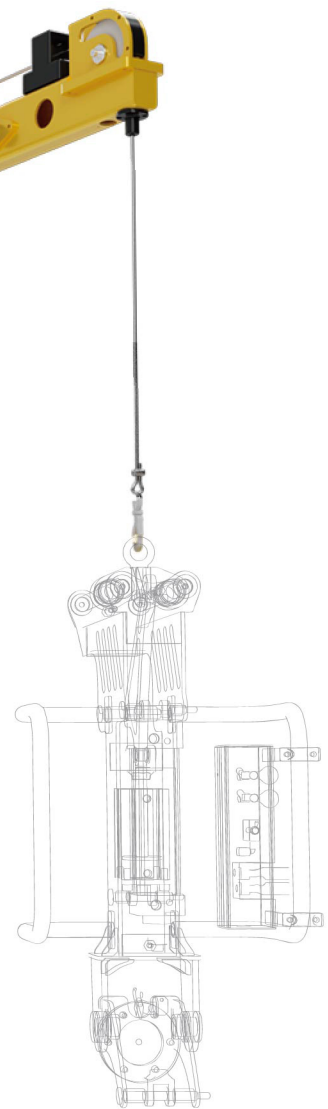
Outreach
4000mm



Air Pressure
0.5-0.8 Mpa



Version
FF - Floor Fixed
FM - Floor Mobile

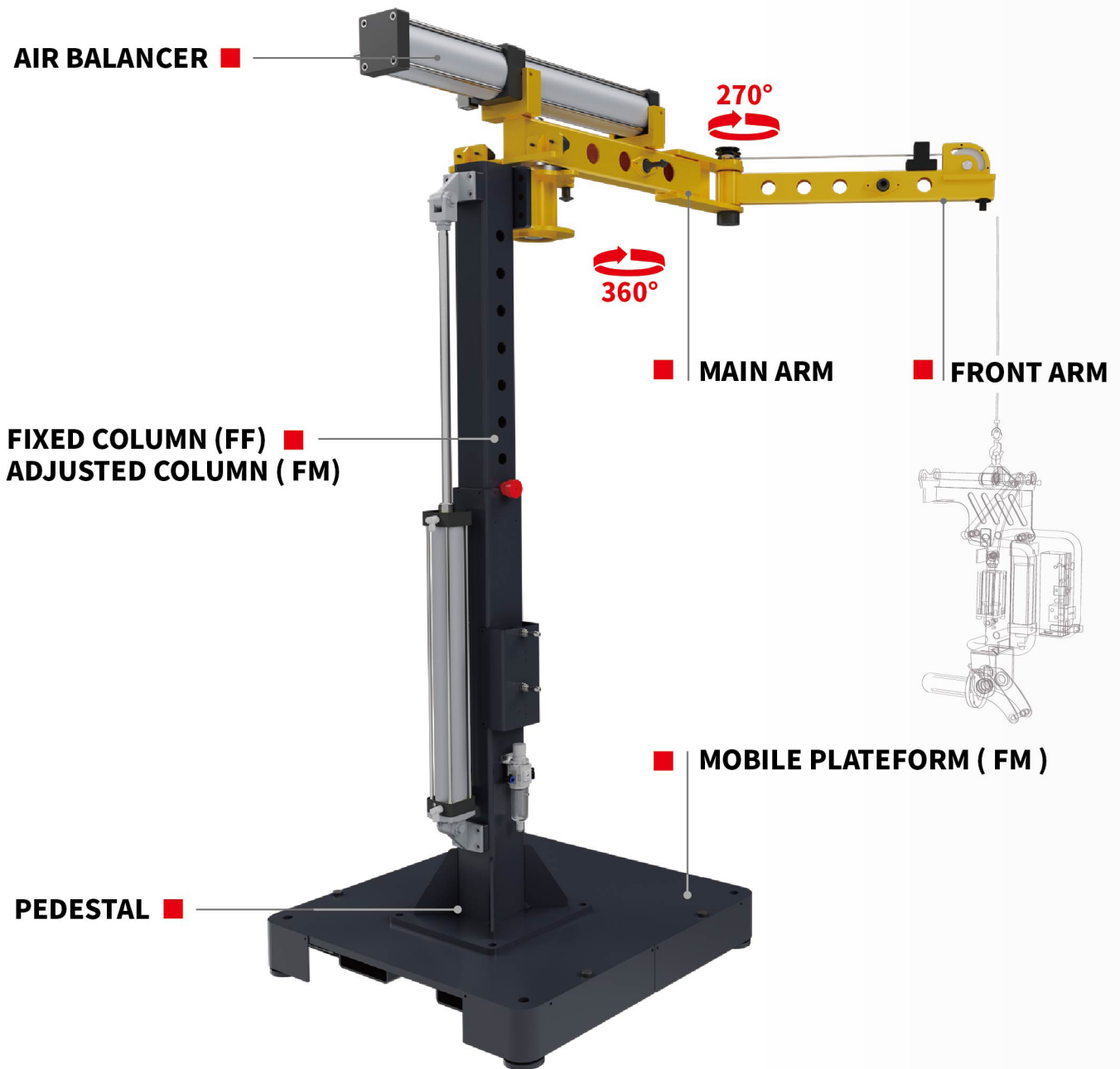


Jib Crane Folding Assistor

PBC-FA FlexCable Manipulator

JIB CRANE FOLDINGASSISTOR

PRODUCT OVERVIEW



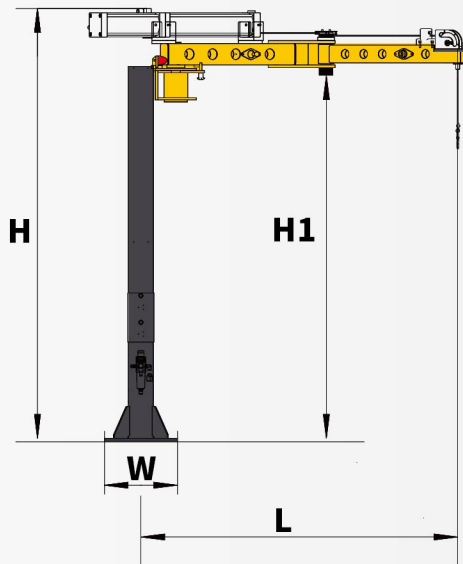
LIFTOAL Jib Crane FoldingAssistor, is an ergonomically designed FlexCable Manipulator, contributes to your healthier workplaces and more efficient productions.

Modular design makes it easy to combine with air balancer, intelligent balancer, chain hoist, vacuum lifter and other lifting devices, suitable for a variety of applications.

Floor Fixed FoldingAssistor, offers lifting capacity up to 125kg, outreach of 2- 4 meters and arm rotation , which makes it an ideal solution for material handling in the typical working conditions in assembly and manufacturing industries.

Floor Mobile FoldingAssistor, the column height is adjusted as required, you can easily move it between different workstations only with manual pallet truck.

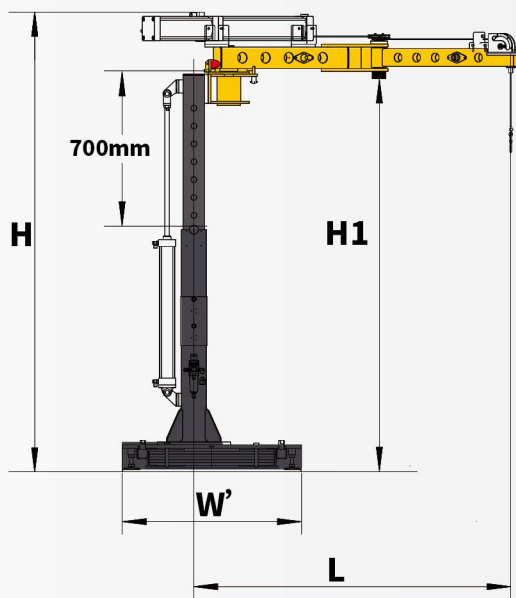
TECHNICAL DATA



FF - Floor Fixed

Type	PBC-FA-FF35	PBC-FA-FF50	PBC-FA-FF100	PBC-FA-FF125
Max. load(kg)	35	50	100	125
Outreach L (mm)	2000	2000	2000	2000
	3000	3000	3000	3000
	4000	4000	4000	4000
Height H (mm)	3000	3000	3000	3000
Height under Arm H1(mm)	2600	2600	2600	2600
Pedestal W (mm)	400*400	400*400	600*600	600*600

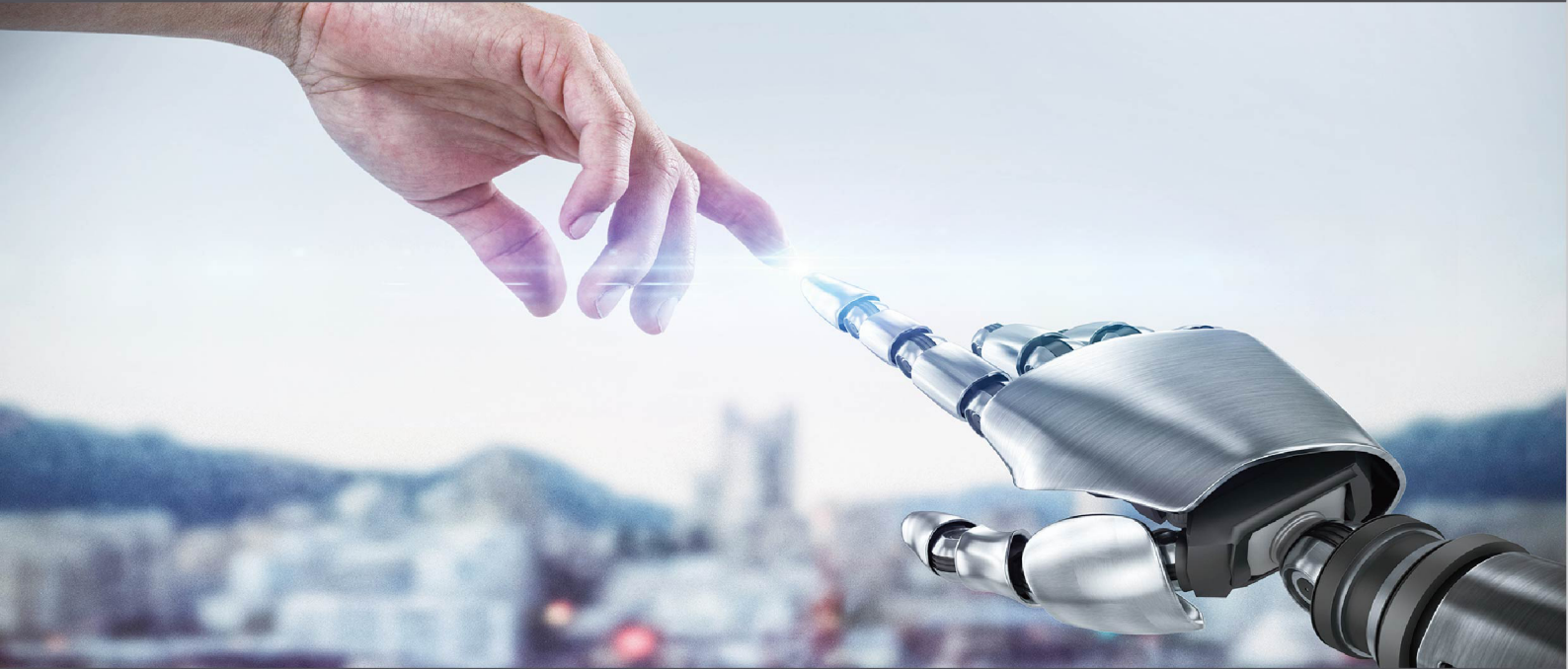
Note: The data could be adjusted according to the actual situation



FM - Floor Mobile

Type	PBC-FA-FM35	PBC-FA-FM50	PBC-FA-FM100	PBC-FA-FM125
Max. load(kg)	35	50	100	125
Outreach L (mm)	2000	2000	2000	2000
Height H(mm)	2600	2600	2600	2600
Height under Arm H1(mm)	2200	2200	2200	2200
Mobile Platform W' (mm)	1000*1000	1000*1000	1000*1000	1000*1000

Note: The data could be adjusted according to the actual situation



Lifting Dreams into the Horizon

www.liftoal.com

info@liftoal.com